

## Positive Surface Results Confirm Productora Potential

Hot Chili has received positive results from a large programme of soil and rock-chip sampling undertaken over priority areas of the advanced Productora uranium-copper-gold project. Highlights from the radiometric and geochemical sampling results include:

- Large radiometric footprint over the Productora project measuring over 4km in strike length
- Highest-grade results from various rock-chip samples:  
**802ppm uranium, 8.39% copper, 15.8g/t gold and 894ppm molybdenum**

The sampling programme results have provided further resolution to assist with the final design of a maiden drilling programme planned to commence at the project once regulatory approvals are received and remaining preparations are complete.

The Productora project is located in Chile's low-altitude coastal range belt, 15km south of the regional mining centre of Vallenar. Productora is the most advanced of Hot Chili's three Chilean projects, containing an operating underground copper-gold mine and rated by Chilean Commission for Nuclear Energy (CCHEN) as the country's largest identified uranium project. CMP, Chile's largest iron ore producer, is a major partner in the project.

### Soil Sampling Programme

Hot Chili has compiled the results of a surface radiometric and geochemical soil sample programme undertaken over the centre of the Productora project. The results revealed significant zones of anomalous copper and molybdenum showing close correlation with the primary corridor of mineralisation as defined by mapping and two primary IP chargeability anomalies.

Over the centre of the project, zones of anomalous copper, molybdenum and uranium in historical soil sample results undertaken by CCHEN were repeated by Hot Chili's programme.

A total of 976 multi-element soil samples were collected and further soil geochemical coverage is planned to expand the definition of the larger Productora mineralised system which at present only remains partially defined.

## Rock-Chip Sampling Programme

To date, a total of 247 rock-chip samples have been collected at Productora during detailed litho-structural mapping of the project by Hot Chili. This sampling has focussed on mineralised material from surface exposures along the main mineralised trend and has returned several significant results as outlined in table 1 below.

Results indicate that wide zones of copper mineralisation like that located at the operating Productora underground copper-gold mine and the abandoned St Innes mine are structurally located. Zones of higher grade uranium mineralisation are more discrete within the NE-trending fault zones which define the primary corridor of mineralisation. Importantly, recent results provide Hot Chili with further confidence of expected grade ranges for mineralisation at Productora.

**Table 1. Selected Significant Surface Rock-Chip Sample Results from Productora**

Sample ID	Easting (m)	Northing (m)	Copper	Uranium	Gold	Molybdenum	Cobalt
			(%)	(ppm)	(ppm)	(ppm)	(ppm)
PD0017	323632	6822971	<b>8.39</b>	90	0.3	265	10
PD0018	323632	6822971	<b>1.22</b>	150	0.4	<b>455</b>	<b>205</b>
PD0021	323580	6822179	0.86	<b>640</b>	<b>1.2</b>	<b>789</b>	5
PD0023	323631	6822233	<b>1.98</b>	<b>240</b>	0.2	<b>432</b>	5
PD0024	323631	6822233	0.13	<b>740</b>	0.0	66	3
PD0096	324495	6825411	<b>4.57</b>	<i>bd</i>	<b>3.8</b>	46	<b>407</b>
PD0100	323486	6824160	<b>2.61</b>	<b>520</b>	0.1	<b>451</b>	<b>691</b>
PD0131	323783	6822659	<b>2.08</b>	<b>274</b>	<b>1.3</b>	135	15
PD0136	324255	6822700	0.02	4	<b>15.9</b>	14	2
PD0146	325161	6828902	<b>1.16</b>	<b>298</b>	0.2	4	56
PD0147	325246	6828910	<b>2.52</b>	<b>802</b>	0.9	3	104
PD0150	323626	6822984	0.81	<b>651</b>	0.2	<b>894</b>	117
PD0228	323310	6820627	<b>5.36</b>	22	<b>1.7</b>	6	128
PD0247	323164	6820182	<b>6.11</b>	17	<b>4.7</b>	99	10
PD0254	322143	6821347	0.08	<b>499</b>	0.0	44	83

Note: *bd* represents below detection limit

For more information please contact:

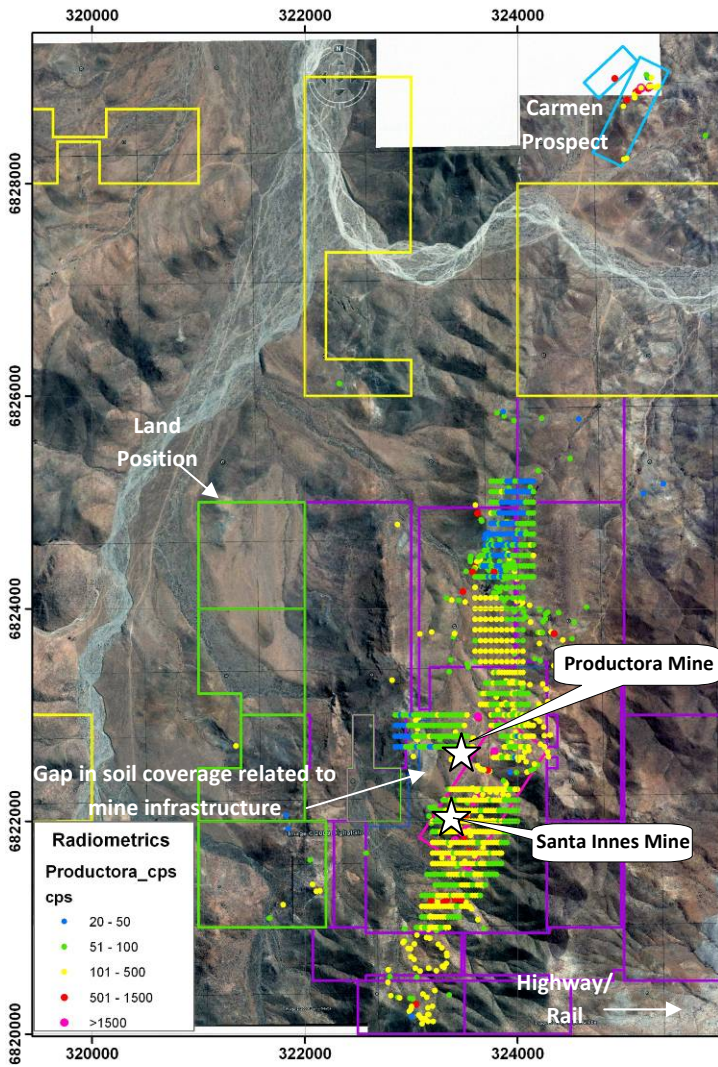
**Christian Easterday**

Managing Director

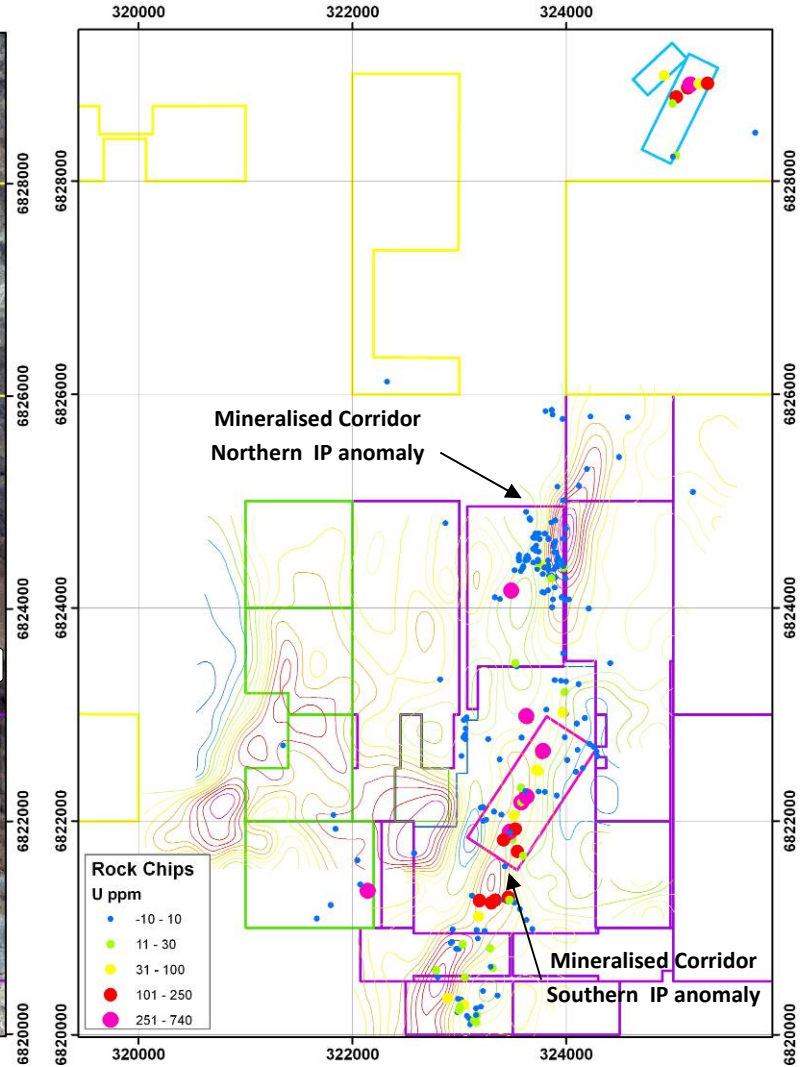
+61 8 9021 3033

christian@hotchili.net.au

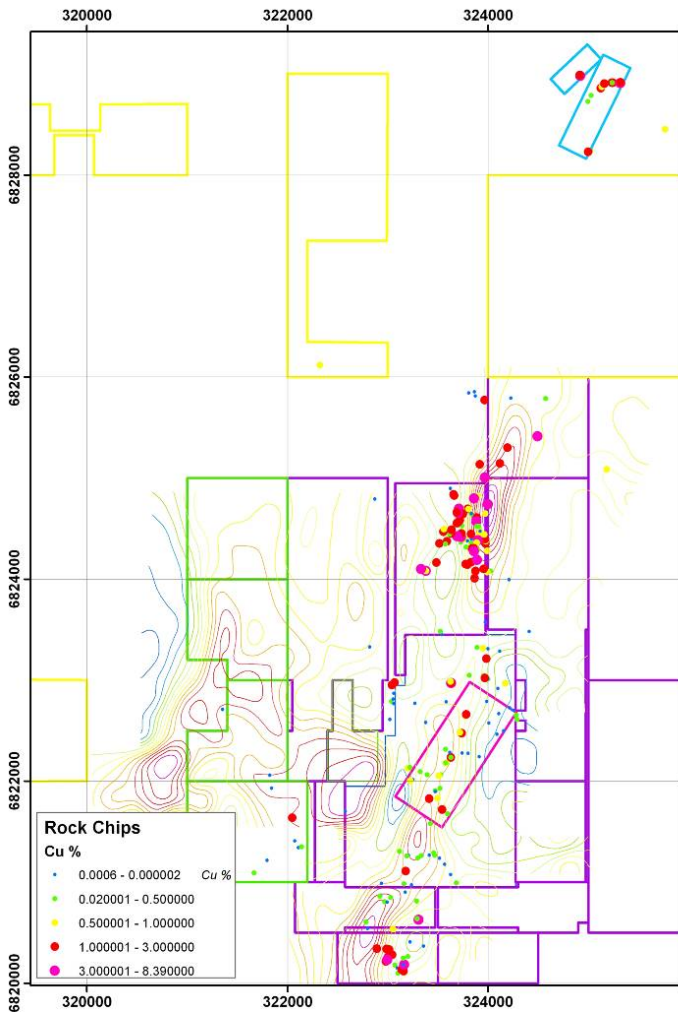
or visit Hot Chili's website at [www.hotchili.net.au](http://www.hotchili.net.au)



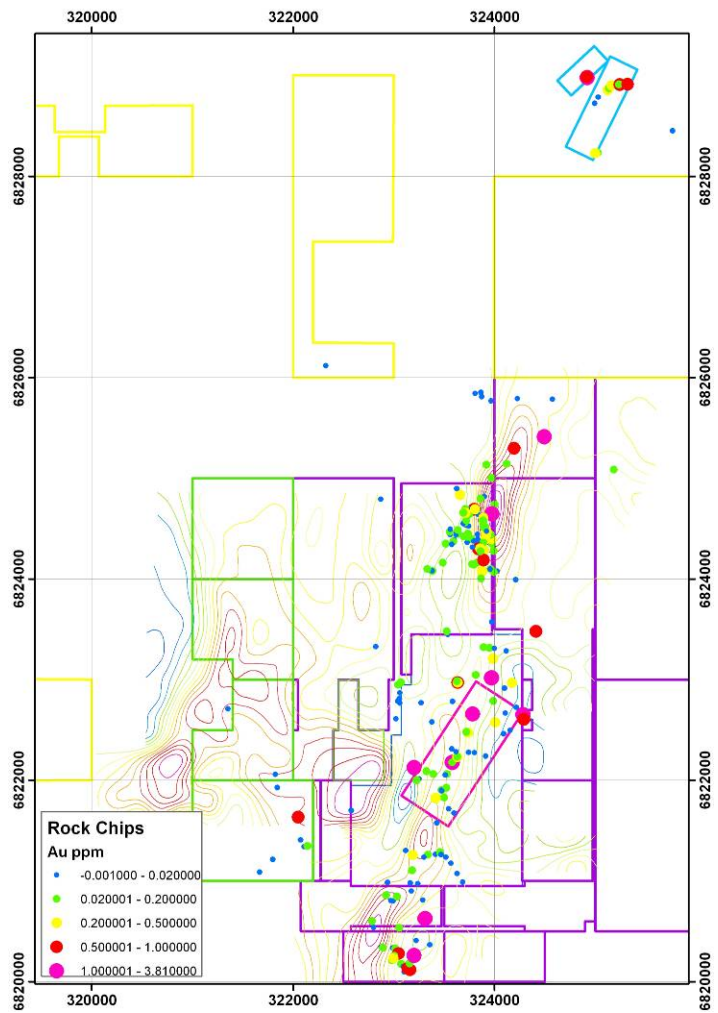
**Productora Surface Radiometric Survey**  
(All Soil and Rock-Chip Data)



**Productora Project Surface Rock Chip - Uranium**  
Results and IP Chargeability Anomalies



**Productora Project Surface Rock Chip - Copper**  
Results and IP Chargeability Anomalies



**Productora Project Surface Rock Chip - Gold**  
Results and IP Chargeability Anomalies

### Competent Person's statement

Information in this announcement that relates to exploration results or mineral resources is based on information compiled by Mr Bernard Roland Mountford, a Director, who is a Member of The Australian Institute of Mining and Metallurgy and a Director. Mr Mountford has sufficient experience which is relevant to the style of mineralisation and type of deposit under consideration and to the activity which he is undertaking to qualify as a 'Competent Person' as defined in the 2004 Edition of the Australasian Code for Reporting of Exploration Results, Mineral Resources and Ore Reserves' (the **JORC Code**). Mr Mountford consents to the inclusion in this announcement of the statements based on his information in the form and context in which they appear.